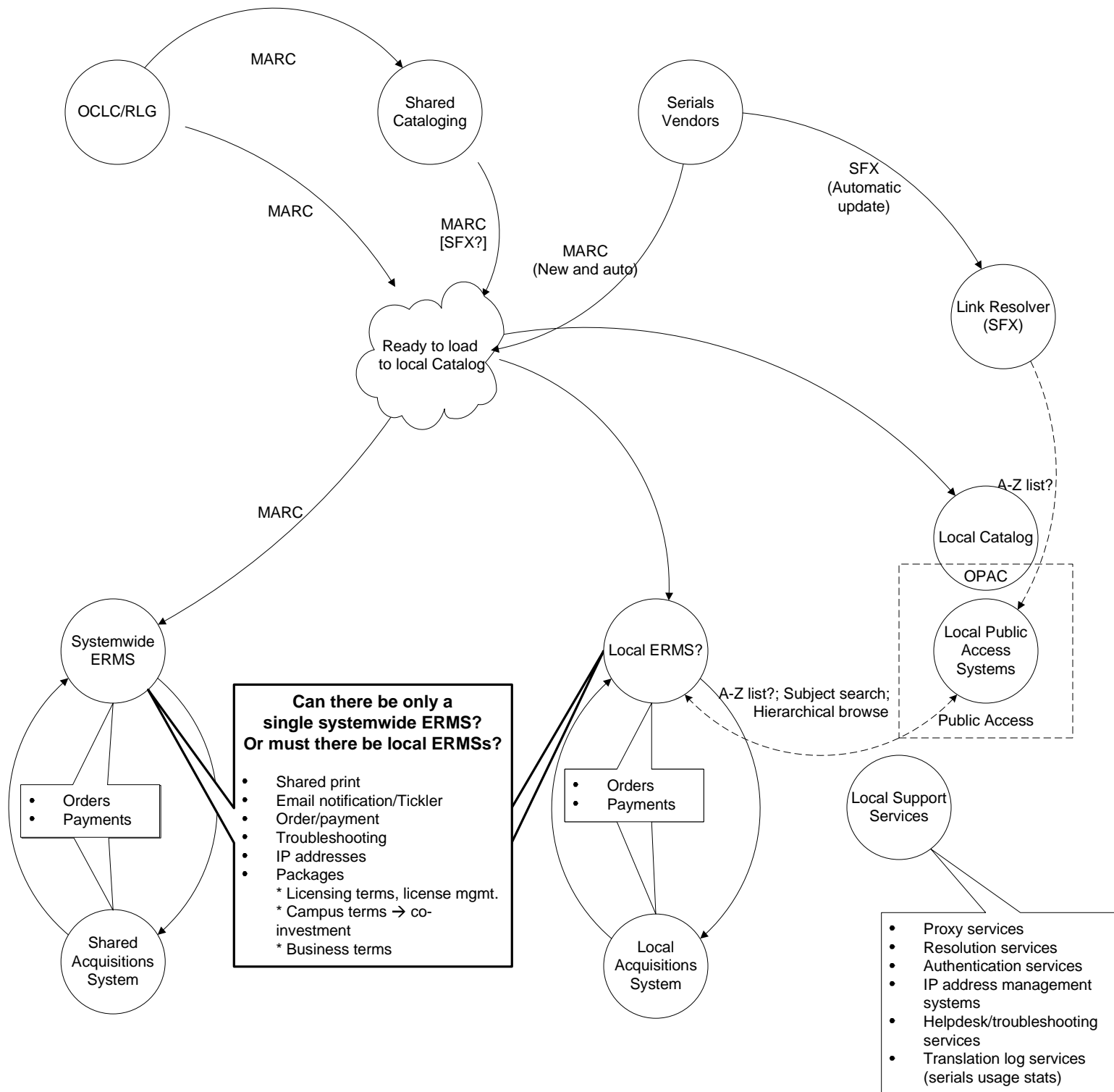


ERMS Data Flow Diagram

Hurley et al, March 12, 2004



LEGEND

Export/Ingest data flow

Real-time communication

- NOTES**
- 1. SCP/Serials Vendors**
 - should autoupdate MARC and URL info for packages and individual titles in ERMS, catalog, SFX link resolver, proxy
 - If possible, they should also add and delete titles from packages in ERMS, link resolver, with warning notification for catalog and proxy

- 2. Acquisitions Systems**
 - At least a minimal data flow between the shared acquisitions system and the systemwide ERMS to support selection decisions
 - Assuming locally subscribed serials are in systemwide ERMS
 - at least minimal data flow to systemwide ERMS to support collection decisions.
 - orders in systemwide ERMS generate notification to campus acquisitions systems to create order record.
 - Assuming locally subscribed serials are NOT in systemwide ERMS
 - Need links between systemwide and local ERMS

- 3. Catalog/Public Access Systems**
 - Need real-time communication to support public access (e.g., catalog searches, dynamic a-z lists, subject searches, hierarchical browse)
 - Data flow for catalogs to populate and update in such a way to get the best record (bibliographic info) in ERMS.