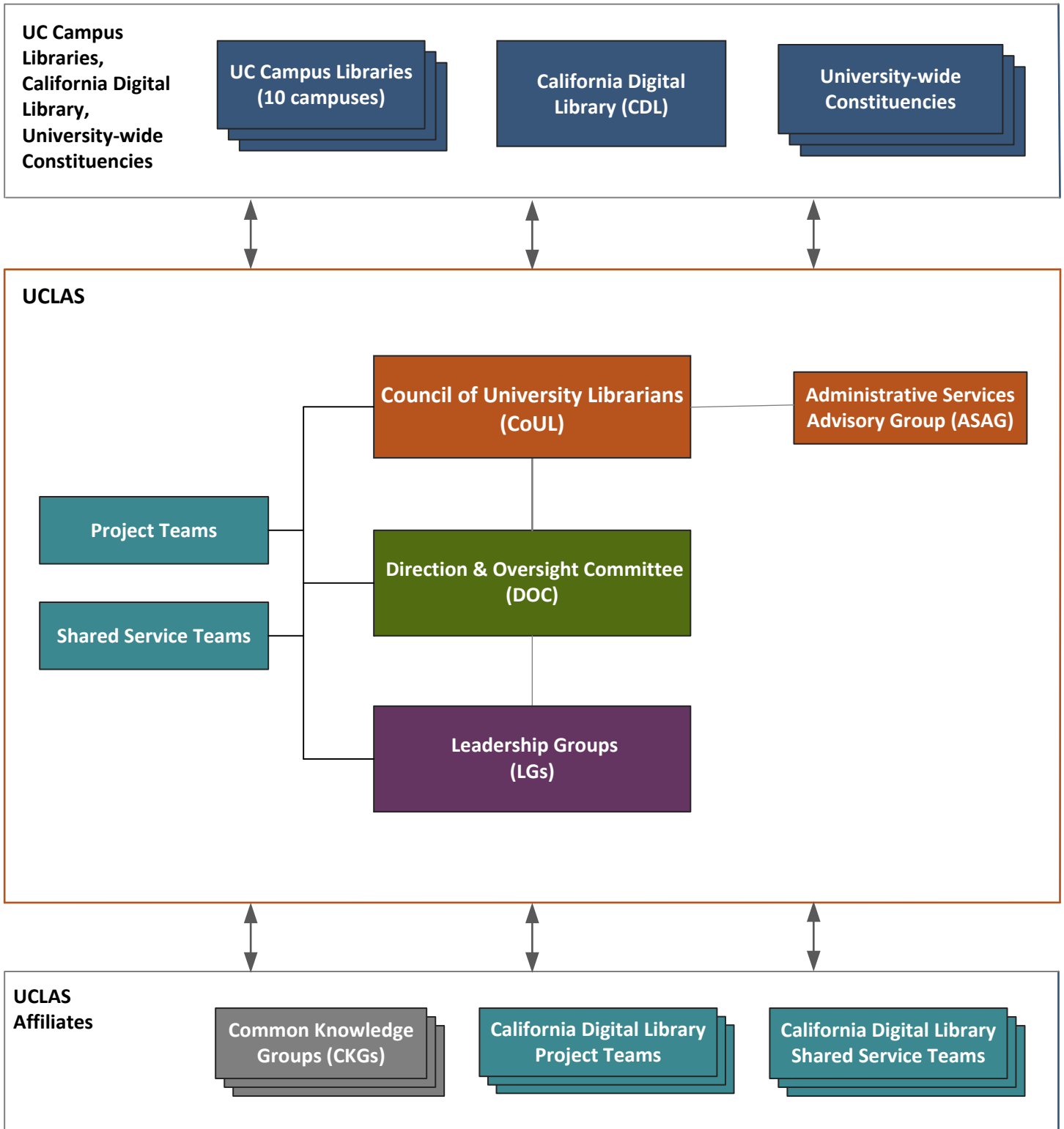


## UNIVERSITY OF CALIFORNIA LIBRARIES ADVISORY STRUCTURE



## UNIVERSITY OF CALIFORNIA LIBRARIES ADVISORY STRUCTURE

Council of University Librarians  
(CoUL)

**CoUL = 10 Campus ULs + CDL AVP/ED + CoUL Planning Lead** - Provides collaborative leadership, vision, and strategic planning that enables the UC Libraries to develop innovative services, strategies, and technological systems.

Administrative Services Advisory Group  
(ASAG)

**ASAG = 10 Campuses** - Advises CoUL on matters related to human resources, business, and space planning.

Direction & Oversight Committee  
(DOC)

**DOC = 10 Campuses + CDL + CoUL Planning Lead + Past CoUL Chair + LAUC Rep** - Carries out priorities, policies and projects established by CoUL. Membership is at the AUL/DUL/senior staff level.

Leadership Groups  
(LG)

**LG = Membership determined case-by-case** - Charged to provide systemwide guidance, coordination, communication, and decision-making related to defined area of operations. Current LGs include Shared Content Leadership Group and SILS Leadership Group.

California Digital Library  
(CDL)

**CDL** - Partners with UC Libraries in developing and maintaining shared services and collections; unit within the UC Office of the President.

Project Teams

**Project Teams = 1+ Campus(es) and/or CDL** - Performs one-time projects with specific outcomes and end dates; may be charged by and report to CoUL, DOC, LG or CDL.

Shared Service Teams

**Shared Service Teams = 1+ Campus(es) and/or CDL** - Delivers a shared service for the UC Libraries on an ongoing basis; may be charged by and report to CoUL, DOC, LG or CDL.

UCLAS Affiliates

**UCLAS Affiliates** – Autonomous and/or self-organized groups that communicate with and/or provide services to UC Libraries.

Common Knowledge Groups  
(CKG)

**CKGs = 2+ Campuses and/or CDL** - Self-organized standing groups of experts or pioneers in areas of interest to the UC Libraries.

University-wide Constituencies

**University-wide Constituencies** - Includes all components of UC Libraries Systemwide Planning & Consultative Structure.